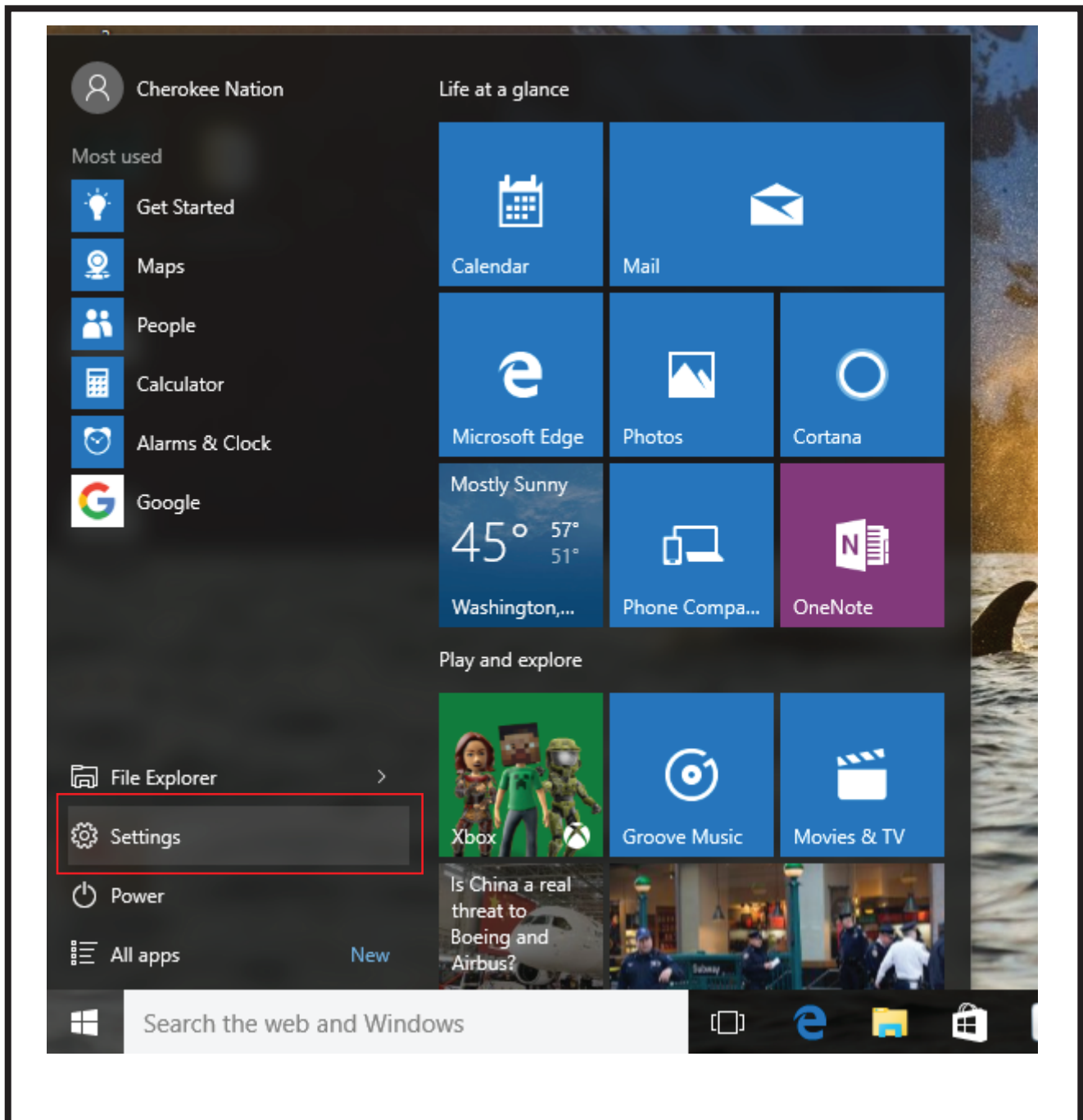


GWY.9 D3F  
CHEROKEE NATION®

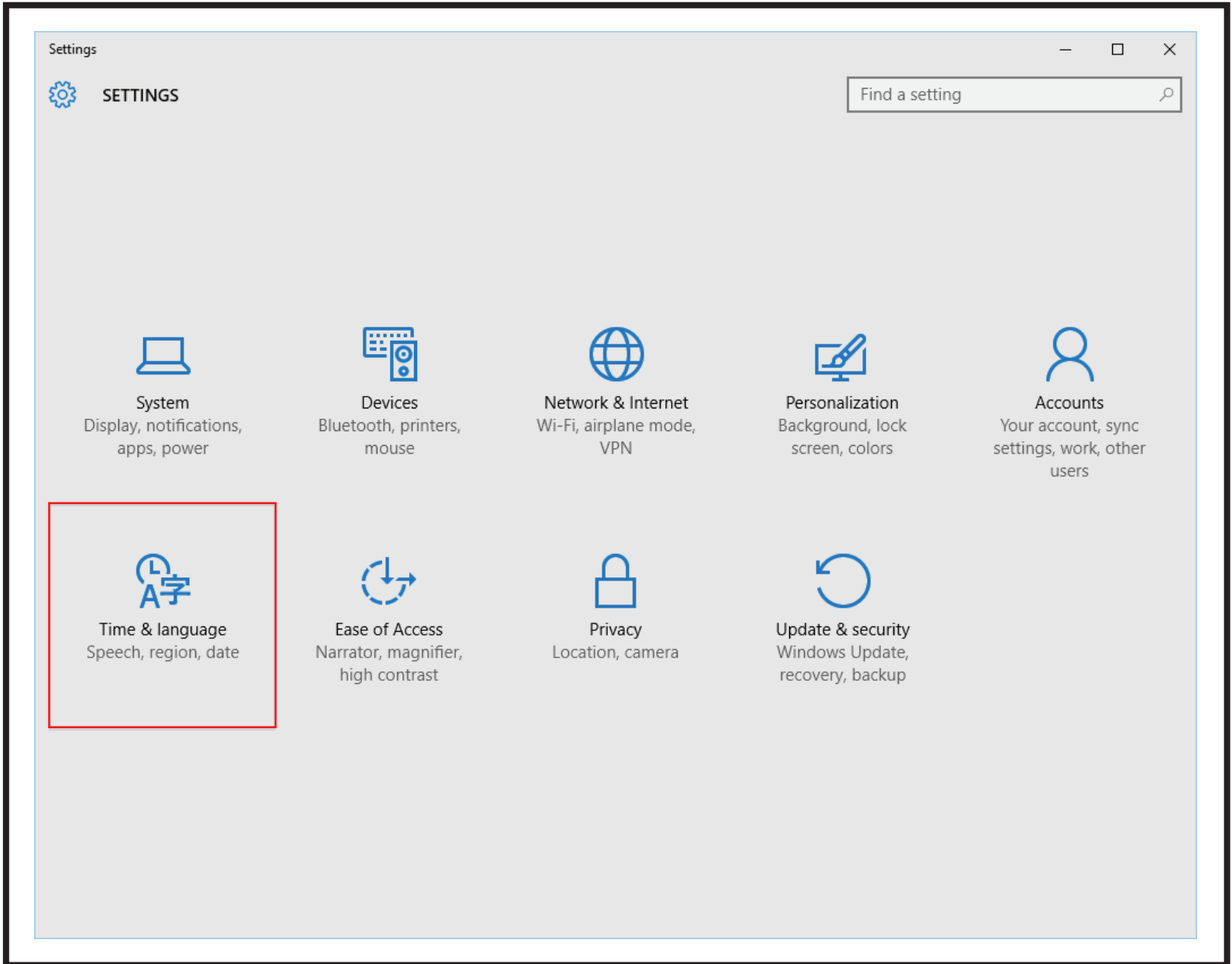


©2009 Cherokee Nation.

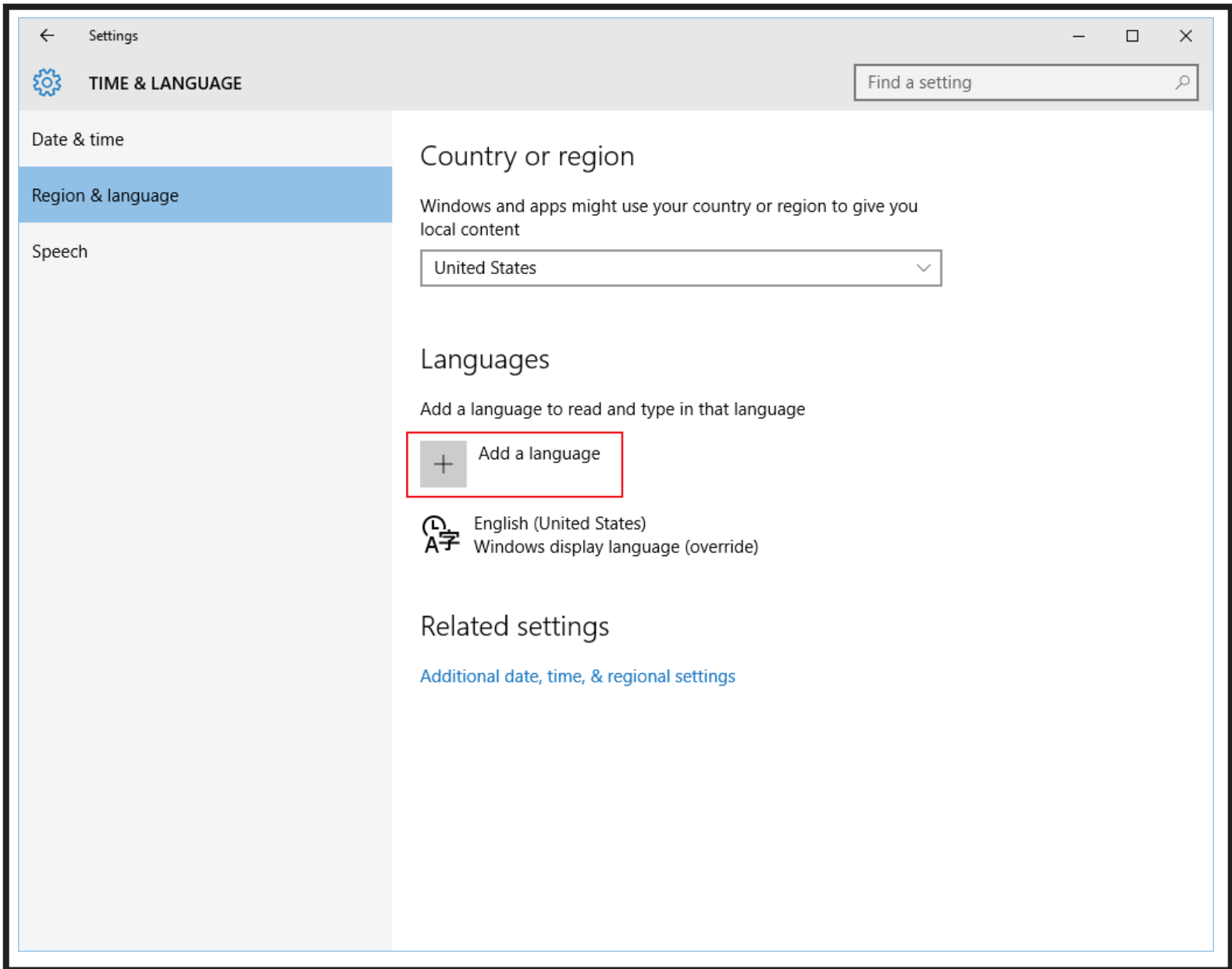
# **How To Change Display Language To Cherokee And Enable Cherokee Keyboards In Windows 10**



First, click the Windows button in the bottom left corner of your screen. Then click "Settings".

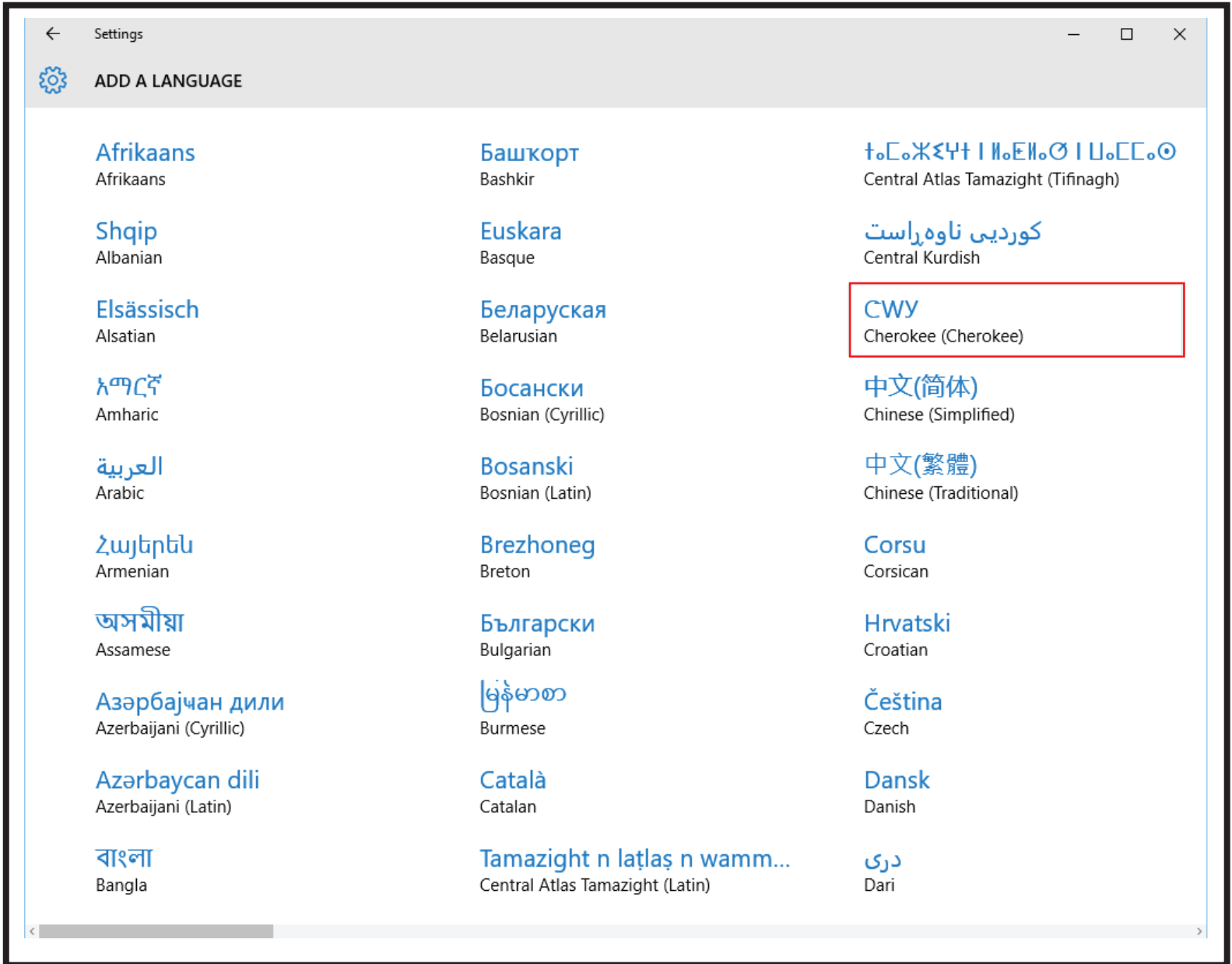


You will now see tiles for each of the sections of the Settings menu. Click "Time & Language".



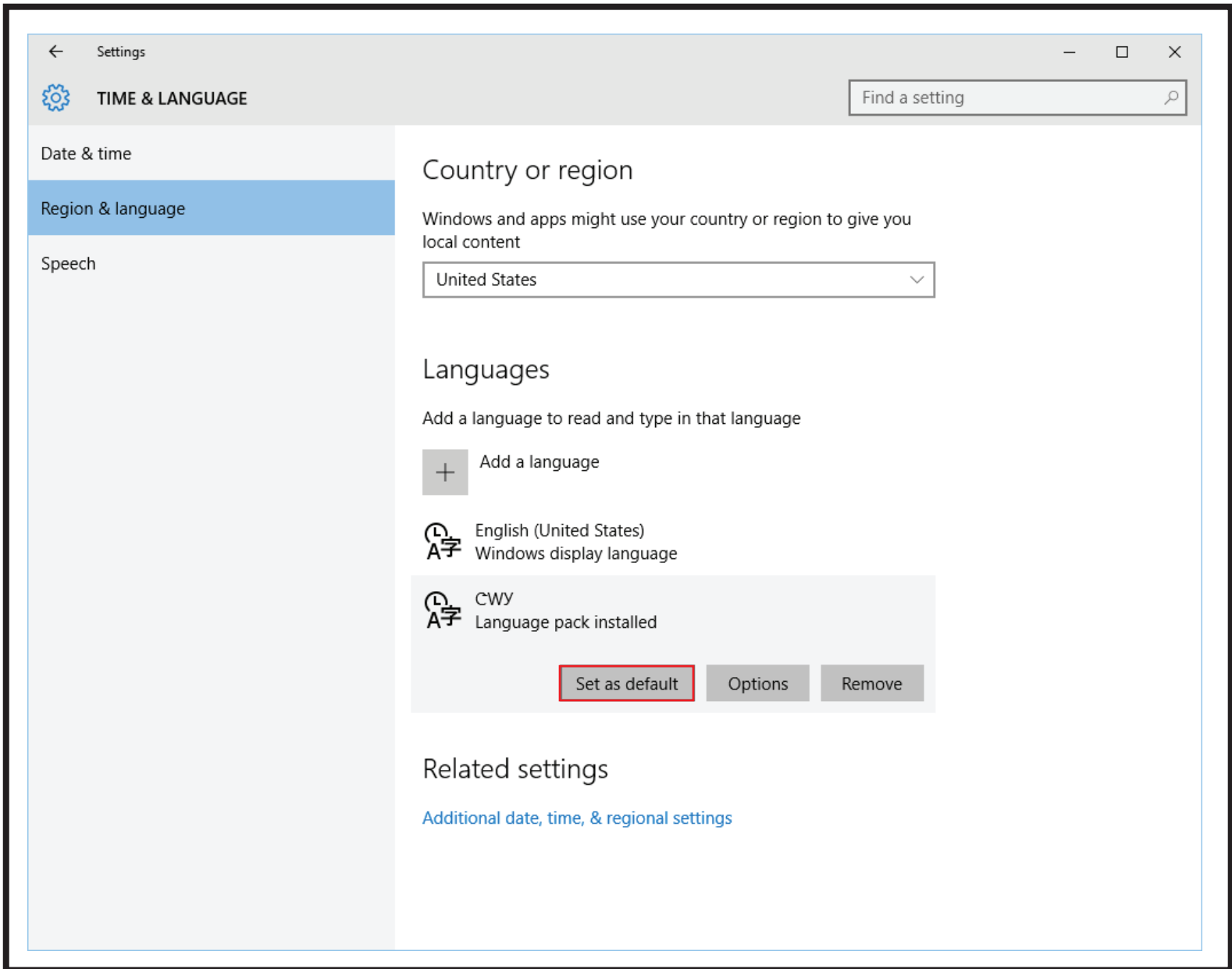
After clicking the “Time & Language” tile, click “Region & Language” on the left of the window. In this section you will see “Languages”.

Click “Add a language”.



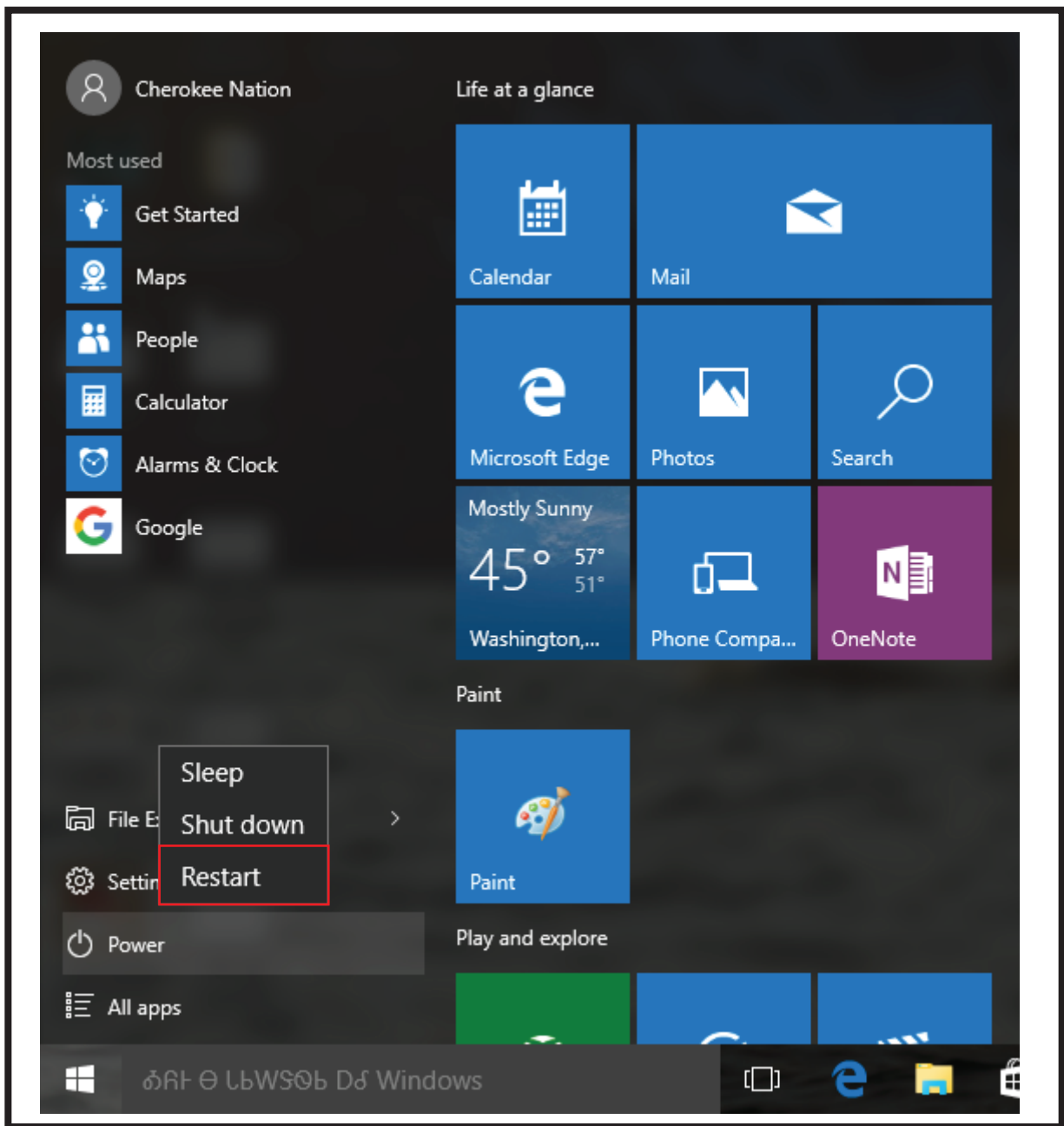
You will now see a list of languages. Cherokee is shown above, immediately before Chinese (Simplified).

Click Cherokee to add it to your languages.



Once you are back at the Language section, click Cherokee. There are three buttons that drop down once the language is clicked. To change your display language to Cherokee, click "Set as default". To finalize the changes, resart your PC.

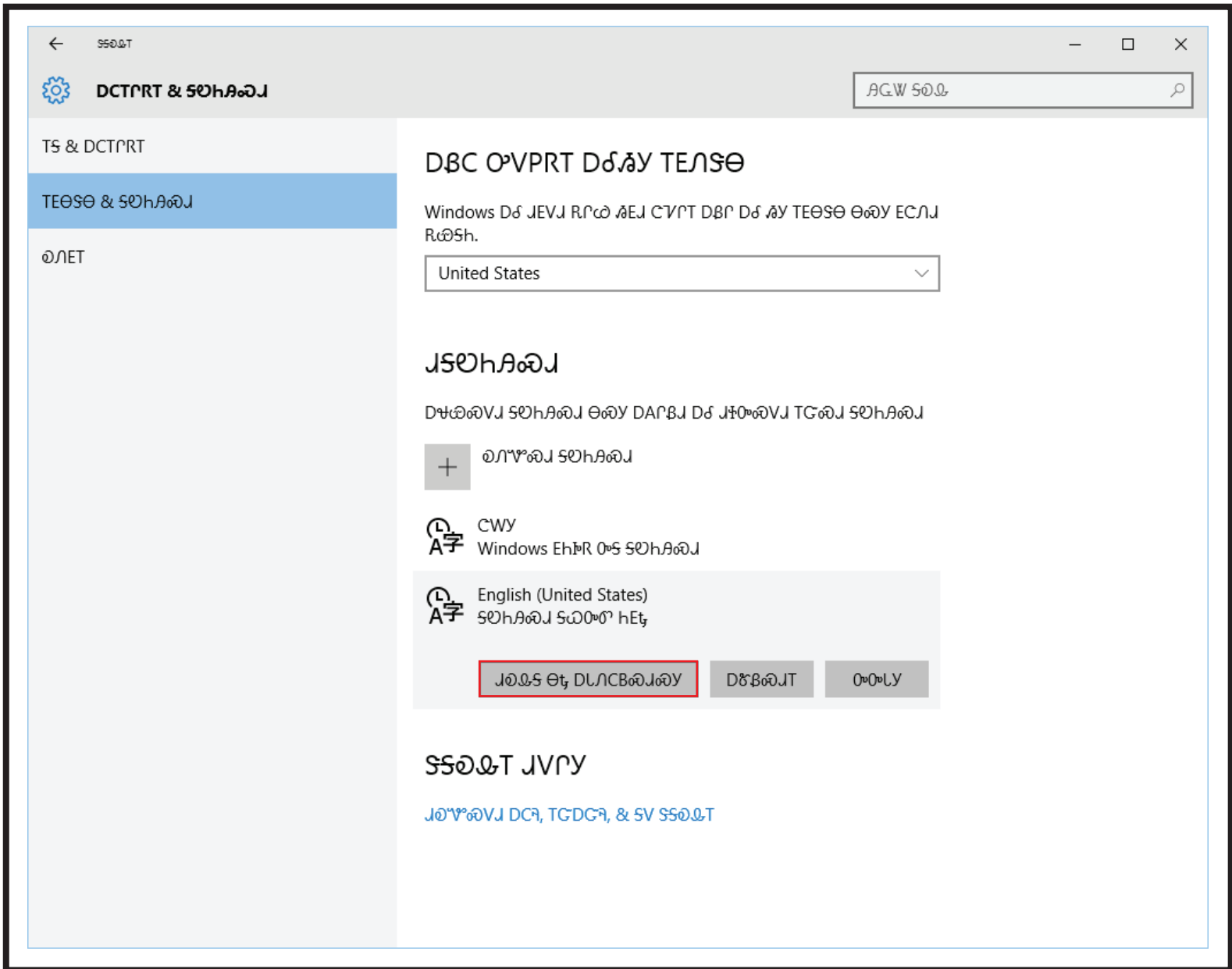
(This will change all display text to Cherokee syllabary. This includes menus, folder options, error messages, and much more.)



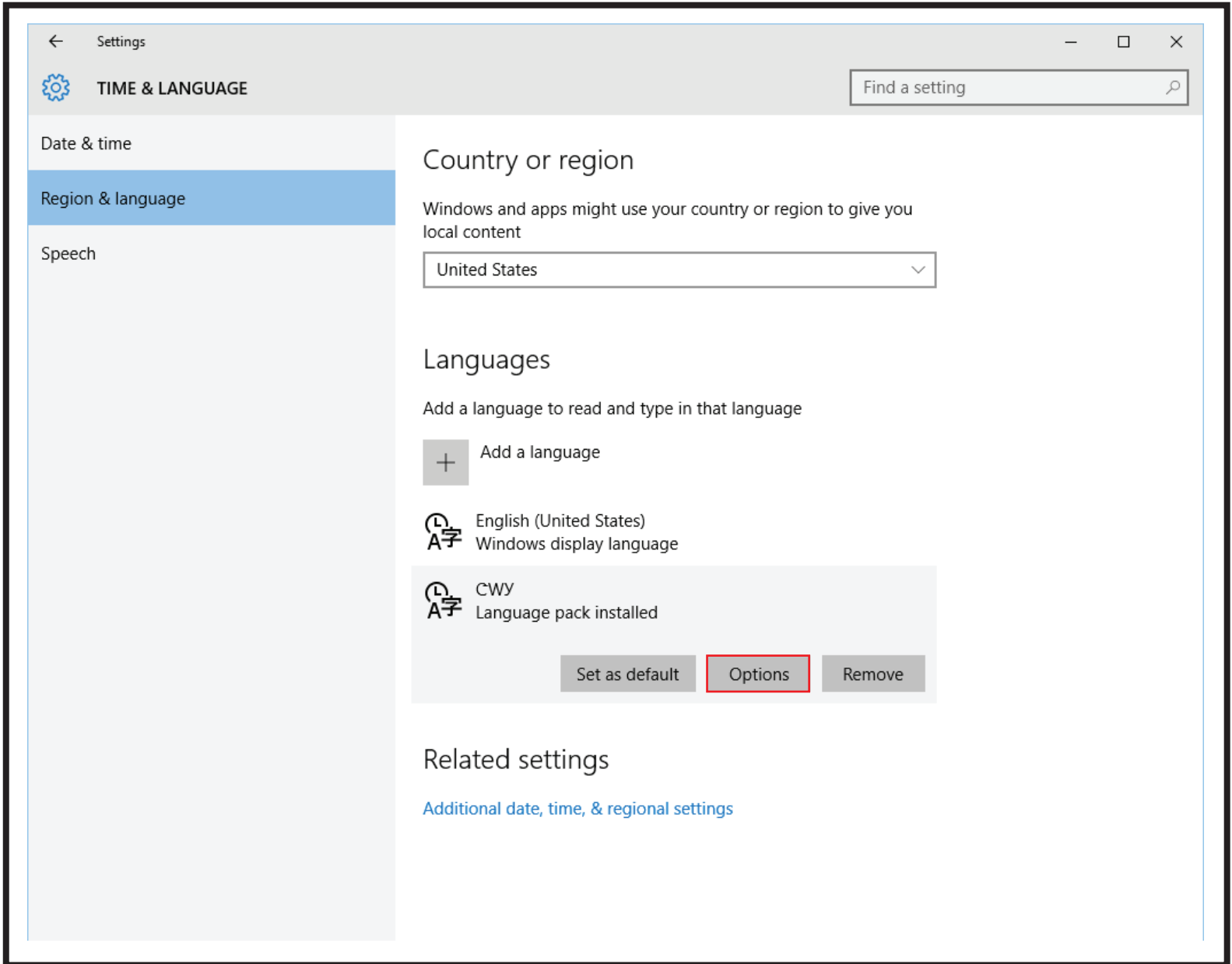
Click the Windows button in the bottom left corner of your screen. Restart can be found on the menu that appears once you click "Power".



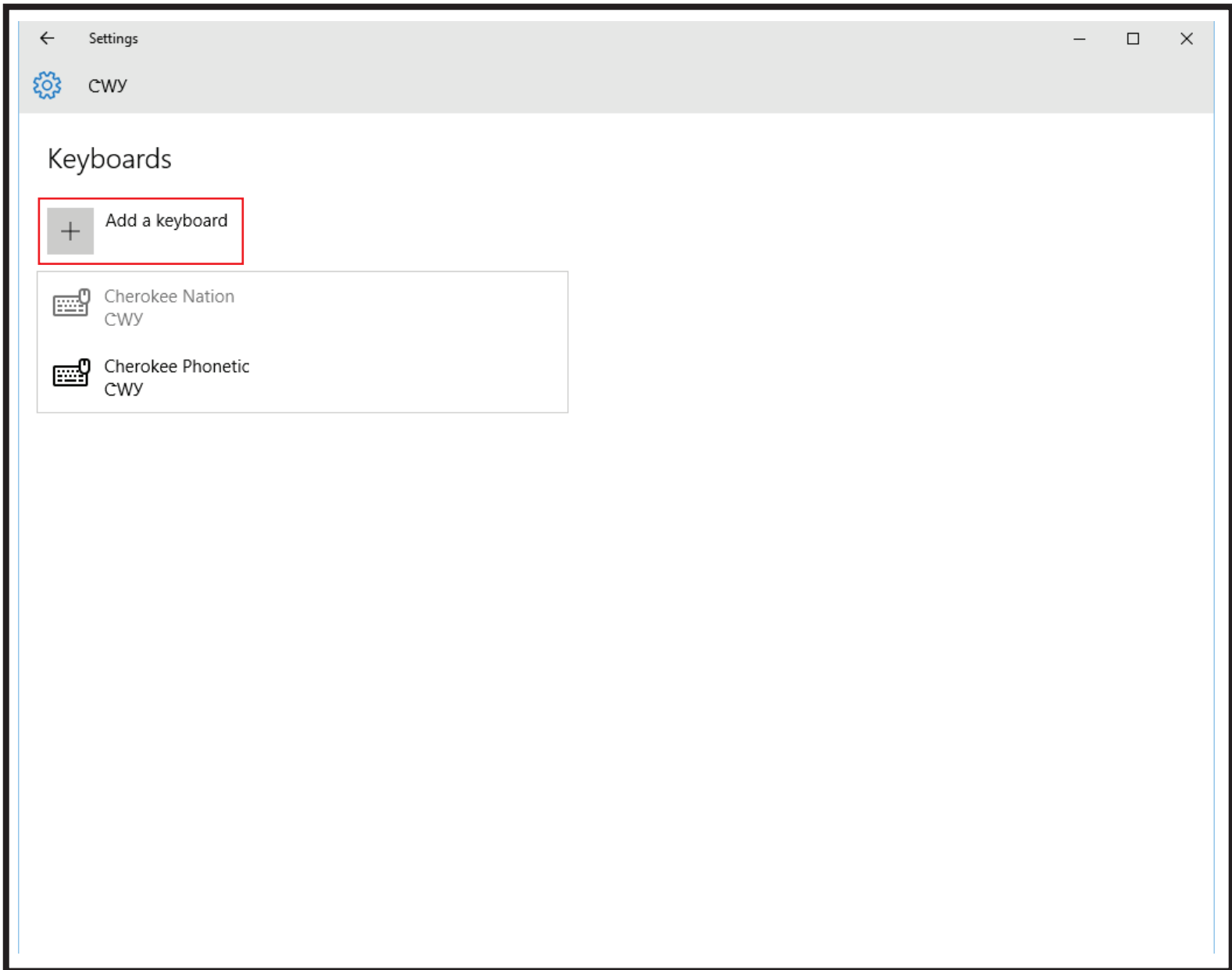




Click "TEΘSΘ & සේවය" on the left of the window to get to the Languages section. Click on English and then click the first button that appears. Restart your PC to return to English.

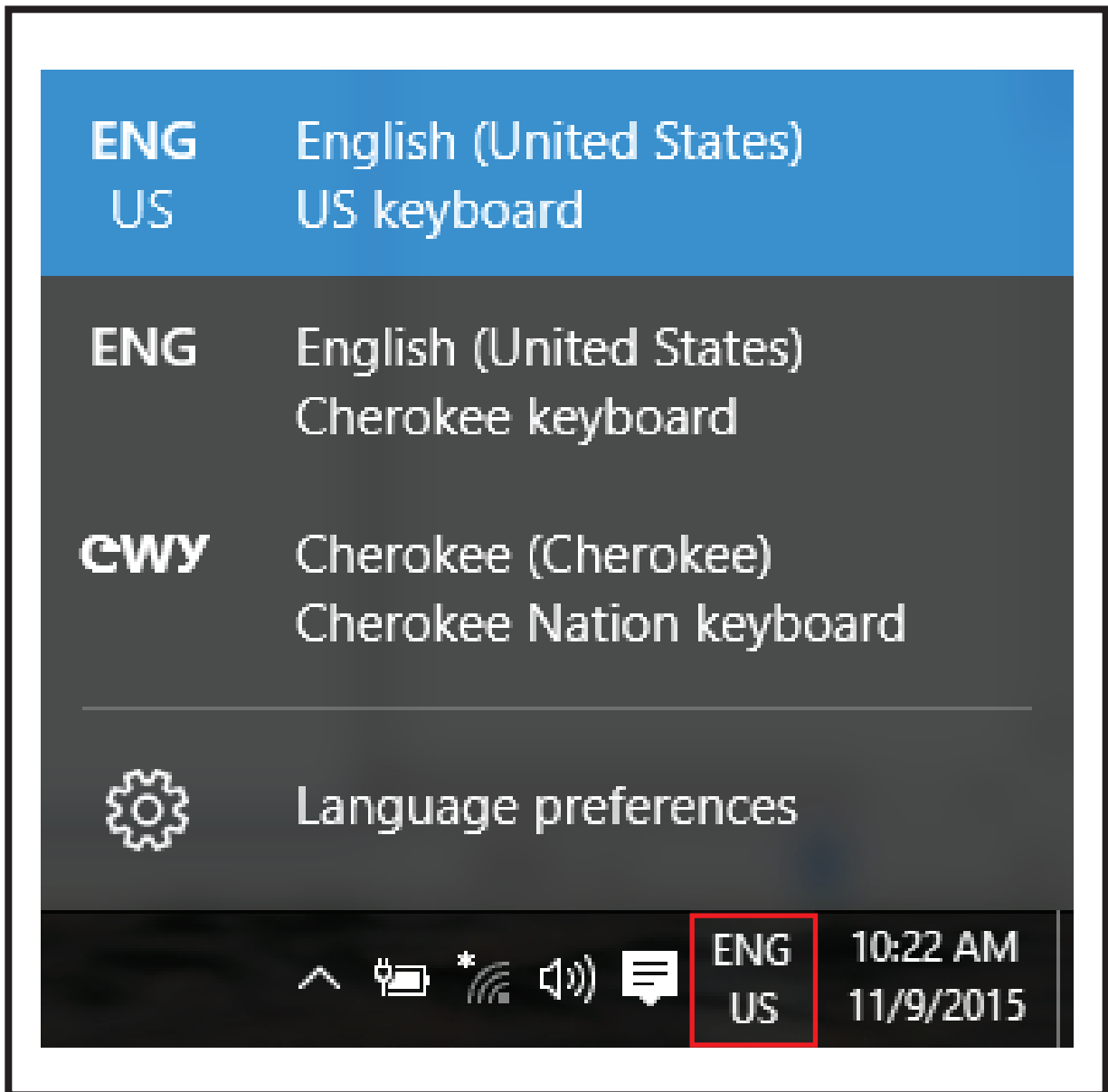


To enable the Cherokee keyboards, click the “Options” button that appears under Cherokee in the Languages section.



You will now see the Keyboards section. Click "Add a keyboard" and two keyboards will drop down. You have two choices, Cherokee Nation and Cherokee Phonetic. Cherokee Nation is a one keystroke keyboard and Cherokee Phonetic displays syllabary as you type the sound that represents each Cherokee syllabary glyph. You can have one or both keyboards active.

Cherokee Nation will be active by default when you add Cherokee to your languages.



You can change your keyboards by clicking the button in the bottom right of your screen, adjacent to your time and date. When English is active you will see ENG US. When Cherokee is active, CWY will be shown on this button. There is no restart required to add keyboards.